



EZ-SLU

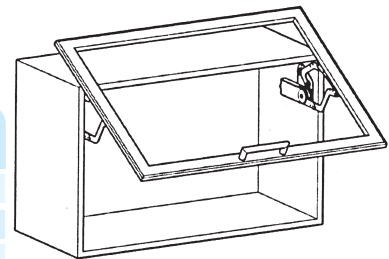
Material : Plastic, Steel

Finish : Light Grey, Nickel

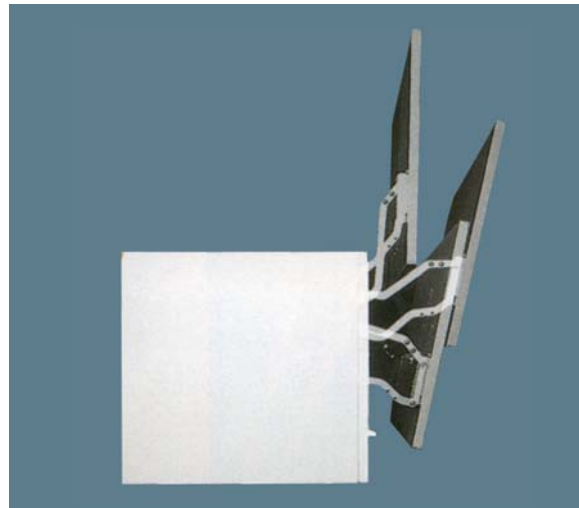
Colour : Light Grey

Supplied with 3.5 x 15 screws

- EZ-SLU unique mechanism will help lift doors easily and hold them up firmly.
- Compact but powerful mechanism will be useful for heavy-duty application, even without a connecting bar.
- Patented LAPCON technology lets the movement glide smoothly and quietly.



Item No.	Cabinet Width (mm)	Door Height (mm)	Door Weight (kg)	Door Torque
EZ-SLU-3				17.6-23.9 N-m (180-244 kgf.cm)
EZ-SLU-4	600-900	600-750	6.0~10.0	24.0-30.2 N-m (245-309 kgf.cm)
EZ-SLU-5				30.3-36.7 N-m (310-375 kgf.cm)



SLUN PAT SWING LIFT-UP

Material: Plastic, Steel

Finish: Nickel

Colour: Grey

Supplied with screws

- With soft closing function
- SLUN unique mechanism will help lift doors and hold them up.
- Sleek & compact design
- Easy installation
- Adjustable mounting plate
- Patented LAPCON technology offers smooth and quiet motion
- Successfully passed 30,000 open.close private cycle tests.

Item No.	Cabinet Width (mm)	Door Height (mm)	Door Weight (kg)	Door Travel Length (mm)	Carton (pair)
SLUN-3			2.5~3.5		
SLUN-4	600-900	390-450	3.6~4.5	390~425	5
SLUN-5			4.6~5.2		



**HDSN-30 PAT.P
HEAVY-DUTY SOFT-DOWN STAY**

Material : Plastic, Steel
Finish : Light Grey, Nickel
Colour : Light Grey
Supplied with 3.5 x 15 screws

- HDSN-30 unique mechanism will save the installation space, and assist the door open and close in a smooth and soft motion.
- Neat, compact design but also heavy-duty use is available.
- One piece used can be available within a certain specification.
- Patented LAPCON technology lets the movement glide smoothly and quietly.

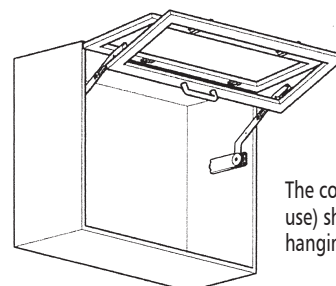
Item No.		Door Torque		
Left	Right	Type	Opening angle 90°	Opening angle 80°
HDSN-30KL	HDSN-30KR	K	13.7-17.5N-m (140-189 kgf.cm)	13.7-19.5N-m (140-199 kgf.cm)
HDSN-30ML	HDSN-30MR	M	17.6-21.5N-m (190-229 kgf.cm)	19.6-24.4N-m (140-199 kgf.cm)
HDSN-30HL	HDSN-30HR	H	21.6-24.4N-m (230-269 kgf.cm)	24.5-29.3N-m (250-299 kgf.cm)
HDSN-30SL	HDSN-30SR	S	25.5-29.4N-m (270-300 kgf.cm)	29.4-34.3N-m (300-350 kgf.cm)

HBFN PAT.P

Material : Plastic, Steel Finish : Nickel
Colour : Light Grey Supplied with 3.5 x 15 screws

- HBFN unique new bi-fold mechanism will assist the door open and close in smooth motion.
- More compact design requires nothing any tracks or guides.
- Handle can be put at lower position.
- Arm length adjustable for various applications
- Patented LAPCON technology lets the movement glide smoothly and quietly.

Item No.	Door Width (mm)	Door Height/pc (mm)	Door Thickness (kg)	Door Weight/pc
HBFN-2S				2.5 - 3.5
HBFN-3S		260-320		3.5 - 4.5
HBFN-4S				4.5 - 5.5
HBFN-2M				2.5 - 3.5
HBFN-3M	450-900	320-370	17 - 20	3.5 - 4.5
HBFN-4M				4.5 - 5.5
HBFN-2L.1				2.5 - 3.5
HBFN-3L.1		370-420		3.5 - 4.5
HBFN-4L.1				4.5 - 5.5



The concealed hinge (overlay use) should be used as a door-hanging device.



NSDX- 10 (R/L) PAT.P
DOWNWARD-OPENING FLAP
WITH SOFT OPENING

with Piano , Butt or Drop Hinges.

NSDX-10 is designed to securely latch a flap closed.

Torque: Torque= Door Calculation

Height x 1/2 x Door Weight

Per piece: 1.96 - 6.686N.m (20-70kgf.cm)

Per pair: 3.92 - 13.72N.m (40-140kgf.cm)



NSDX- 20 (R/L) PAT
TOP OPENING FLAP STAY
WITH SOFT CLOSING

with Piano , Butt or Concealed Hinges.

NSDX-20 is designed to hold a flap in the fully opened position.

Torque: Torque= Door Calculation Height x 1/2 x Door Weight

Per piece: 1.96 - 6.686N.m (20-70kgf.cm)

Per pair: 3.92 - 13.72N.m (40-140kgf.cm)



NSDX- 35-2S (R/L) PAT
UPWARD OPENING FLAP STAY
WITH SOFT CLOSING

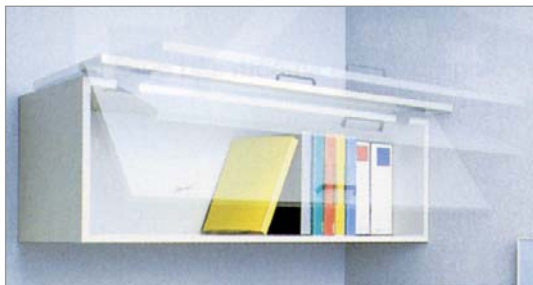
with Piano , Butt or Concealed Hinges.

NSDX-35-2S/Angle adjustable from 80° to 100°

Torque: Torque= Door Calculation Height x 1/2 x Door Weight

Per piece: 1.96 - 4.9N.m (20-50kgf.cm)

Per pair: 3.92 - 9.8N.m (40-100kgf.cm)



OV - OVER -THE-TOP FLIPPER DOOR

- Makes closings smooth and quiet.
- Doors will not slam shut.
- Ideal for office overhead filing storage, Laboratory and kitchen cabinets, etc.
- Adjustable closing speed.



OV-1



OV-2

FLIPPER DOOR WEIGHT AND SIZE

Approximate door weight and size should be as follows based on 2 units per door.

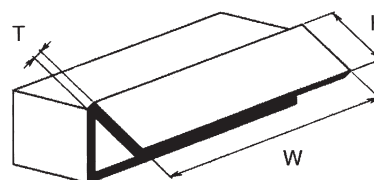
- Door weight : 3-5kg. (6-11lbs.) for OV-1 (light duty)
60-100kg.cm (55-85lbs.inch)*
5-8kg. (11-18lbs.) for OV-2 (heavy duty)
100-160kg.cm (85-135lbs.inch)*

Door thickness (T): 19mm (3/4") or 20mm (as standard)

Door width (W) : 700-1,400mm (27-58")

Door height (H) : 350-450mm (13-18")

Note: *1/2 x H x door weight.



NEW SOFT DOWN STAY SDS-C100-TV, SHORT ARM VERSION

- Suitable for low-height cabinet such as AV cabinet
- Minimum height 140mm
- Operational Torque moment - 5.0 - 12.0kgf/cm (0.49-1.18N/M)
- Black and white version available
- For Cabinet with width over 900Mm, use of 2 stays recommended



Stays



Gas Spring

DSC-001 x 245mm :
8kg, 10kg, 13kg, 15kg, 20kg
DSC-001 x 160mm:
10kg, 13kg, 15kg
ST-A858 x 300mm:
8kg, 10kg, 13kg, 15kg



B288

Heavy Duty Lift Up
Stay
(Free stop at any
position)



SFD-004-2

Lift Up Stay
Steel
Nickel Plated

Wing Lift-up System



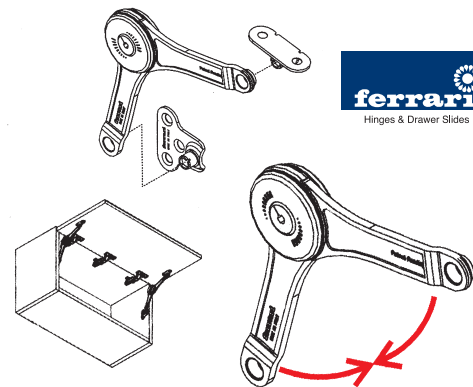
New Lid Stay

- Max 480mm Height x 1200mm Width
- Built-in soft-closing
- Gas Pistons for different door weights
- 3D cam adjustment
- Optional carter available
- High stability with connection bar
- 100% Italian Design
- Available Parallel & inclined versions (35° & 45°)
- Made In Italy



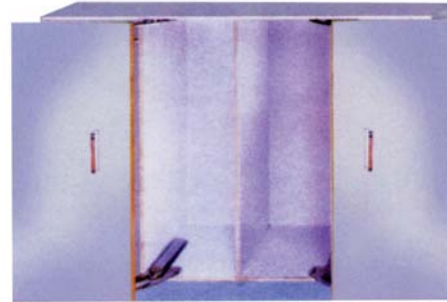
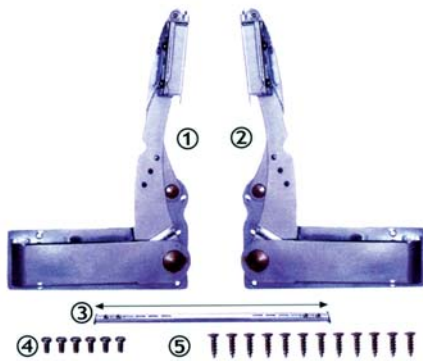
PGA276C, 100A, 150A

Gas Stay
10kg, 15kg



LEIGC00

Flap Join Stay
Brake In Closing



SFD-024 Translate Stay

Gas Power

- ① Main Body
- ② Main Body
- ③ Synchronous Bar
- ④ Eight 4" 6 Screws
- ⑤ Ten 4" 12 Tapping Screws

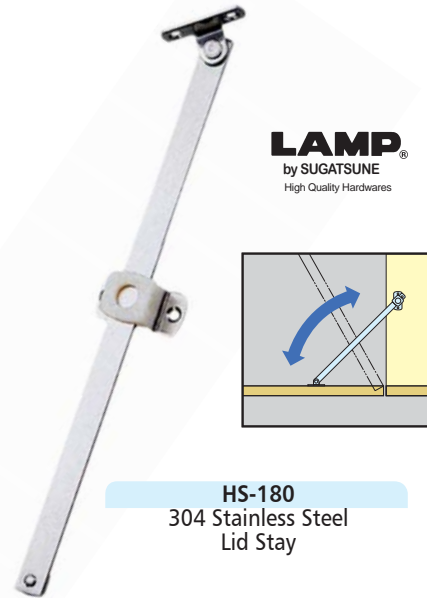


195, 270
Lift Up Stay
Stainless Steel



LAMP
by SUGATSUNE
High Quality Hardwares

S-55/6" x 9"
Lift Up Stay



LAMP
by SUGATSUNE
High Quality Hardwares

HS-180
304 Stainless Steel
Lid Stay

TOP-OPENING FLAP STAY

SLS-ELAN 20



Lapcon

LAMP
by SUGATSUNE
High Quality Hardwares



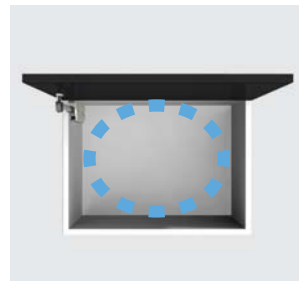
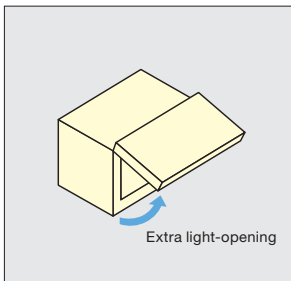
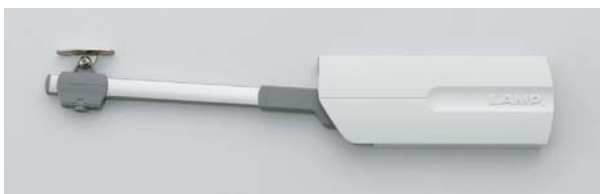
- For top-opening flap doors
- Lift easy function for easy and smooth opening
- Soft closing function for silent and safe closing
- Simple installation for aligning body to edge of cabinet
- Single or pair use allow wide range of door size / weight
- Ideal for toy boxes
- Optional logo plate available

Item No.	Torque per piece
SLS ELAN 20M	50-75 kgf • cm
SLS ELAN 20H	75-100 kgf • cm

Stays



SLS-ELAN / SLS-ELAN-X



3 functions on 1 stay

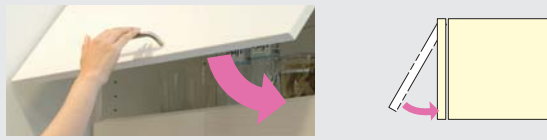
1. Lift-assist



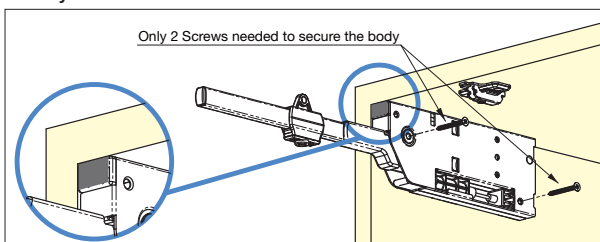
2. Free stop



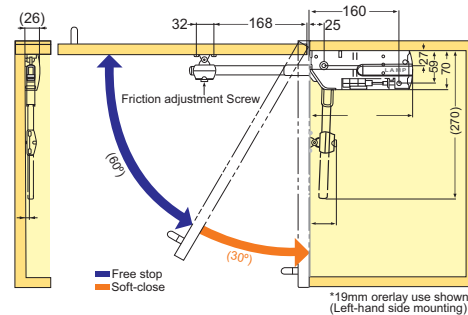
3. Soft-close



Easy Installation



LIFT ASSIST STAY

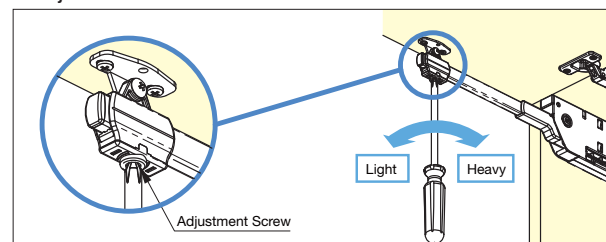


Advantages:

- Quick & Easy installation:
 - a) Non Handled
 - b) No measurement required...
 - c) Front speed adjustment
- Great cost saving due to 1 piece application on certain door sizes.
- Slim & compact design
- Fully utilize the inner space of the cabinets.
- Extra light opening due to lift assist.

Item No.	SLS-Elan-MR Right	SLS-ELAN-ML Left	SLS ELAN-HR Right	SLS-ELAN-HL Left
Type	M-type (Medium Duty)	M-type (Medium Duty)	H-type (Heavy Duty)	H-type (Heavy Duty)
Torque per piece	55-75kg*cm (48-65lbs*in)	55-75kg*cm (48-65lbs*in)	75-100kg*cm (65-87lbs*in)	75-100kg*cm (65-87lbs*in)
Material	Aluminium, Steel, ABS			
Finish/ Color	Anodized, Galvanized, Light Grey			

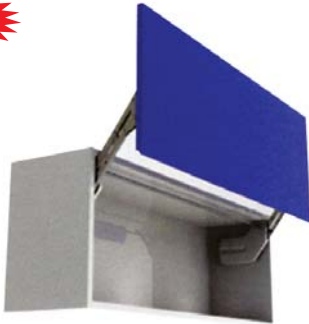
Adjustment



SWING LIFT-UP STAY



SLU-ELAN



- Unique swing mechanism
- Lift-assist function for easy and smooth opening.
- Soft-closing function for silent and safe closing.
- Sleek and compact design
- Optional logo plate available

Door Weight	Max. 10kg
Door Height	400-550mm
Door Width	600-1,200mm

LIFT ASSIST STAY

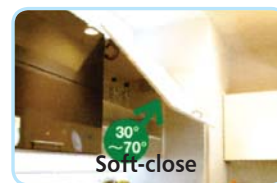
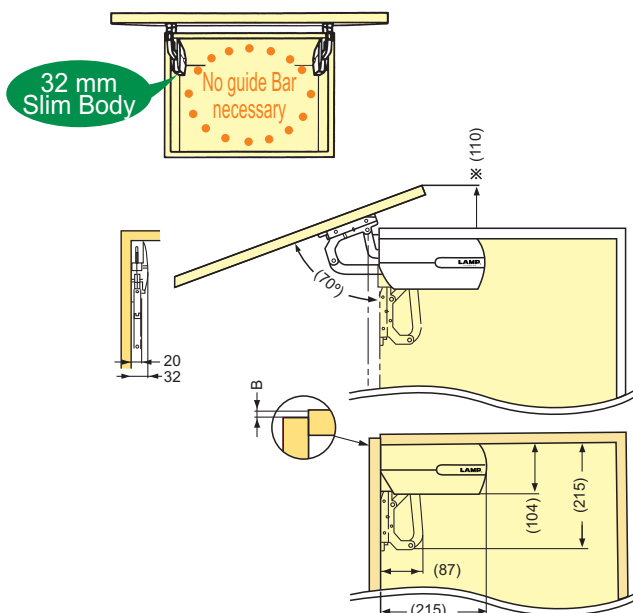


EZS-ELAN



- Lift-assist function for easy and smooth opening
- Soft-closing function for silent and safe closing
- Free stop function from 30°-70°
- Simple installation by aligning body to edge of cabinet (Time saving)
- No hinge, no guide bar required.
- Clip-on mounting plate for speedy door installation
- 3 powers available (L,M,H)
- Optional logo plate available

Door Weight	5-12.5kg
Door Height	500-750mm
Door Width	Max. 1,200mm



Lift-assist



Free-stop

